

# Lincraft

# SHOWS YOU HOW

My Lincraft  
shopping list

The measurements shown will make a size 8. You will need to add or decrease quantities according to size.

- \* Depending on the size of your child 1.7 - 2.5 mts of 120cm wide fabric.
- \* 80cm of 1cm wide non roll elastic.
- \* Light weight interfacing for making pattern.
- \* Tapemeasure or 1mt ruler.
- \* Thread to match.
- \* Sharp dressmaking sissors.
- \* Sewing machine.
- \* Pins

Join the club



Its simple, It's free.

## create your own

## Art smock



**Step 1.** Using the lightweight interfacing draw out your pattern for the front/back and the sleeves according to the measurements shown. This pattern fits a size 8 you will need to enlarge or decrease the measurements according to size.

**Step 2.** Cut out two of the front/back one for the front one for the back, cut out two sleeve pieces and 1 pocket.  
**Step 3.** With the right sides of the fabric facing each other pin the arms to the front and back.

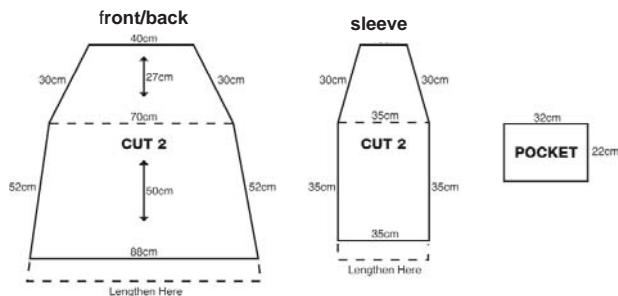
**Step 4.** Sew from the neck line to the under arm on each of the four sides, fold the smock in half and with the right sides facing pin the front to the back from the wrist to the hem, stitch. Neaten the seams by overlocking if desired.

**Step 5.** Make neckline and sleeve casing by folding over 1cm then again 1.5cm pin & stitch leaving a 2cm opening.

**Step 6.** Thread 50cm of elastic through the neck and 15cm through each sleeve, stitch the ends together and stitch opening closed.

**Step 7.** Hem the bottom by folding over 1cm then again 2cm or desired length.

**Step 8.** Fold all 4 sides of the pocket over 1cm then across the top again 1.5cm, press and pin, sew across the top edge. Pin the pocket into position and sew around the 2 sides and the bottom.



[www.lincraft.com.au](http://www.lincraft.com.au) more free patterns in store